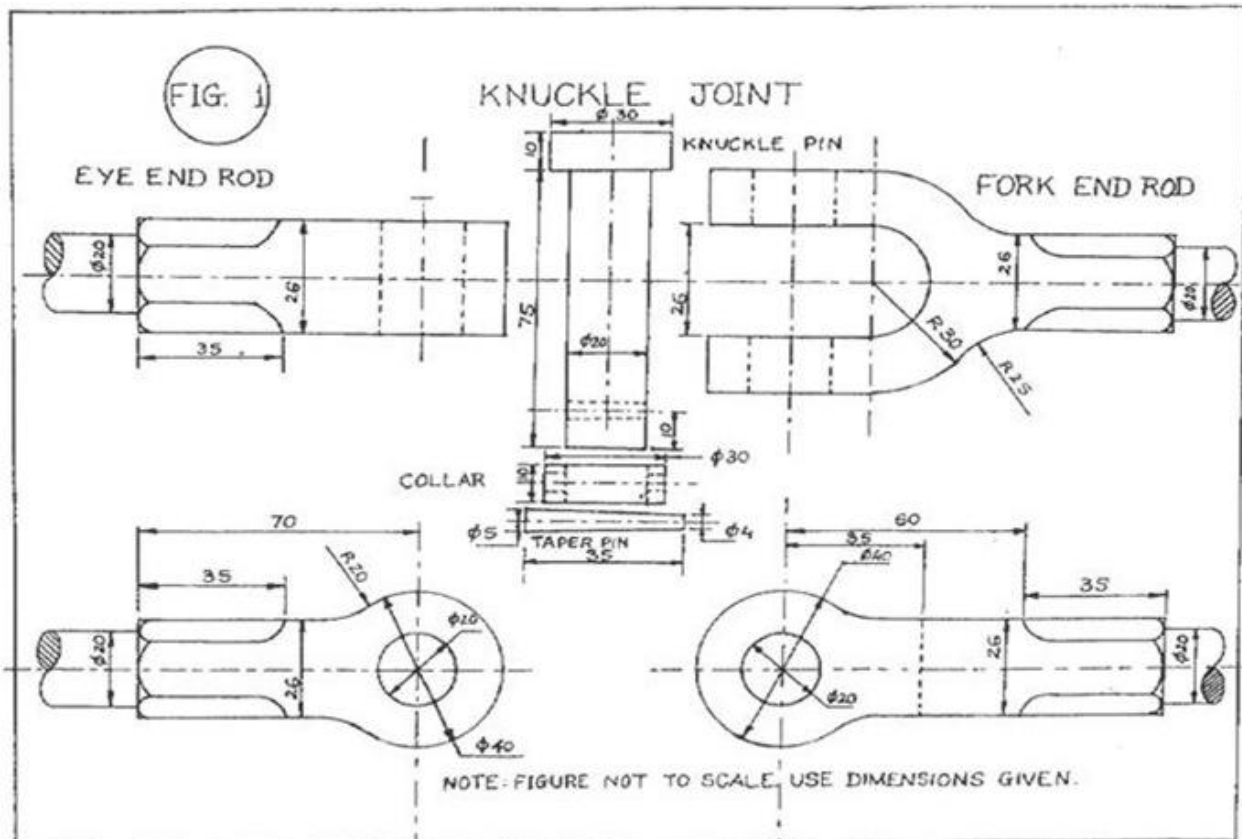
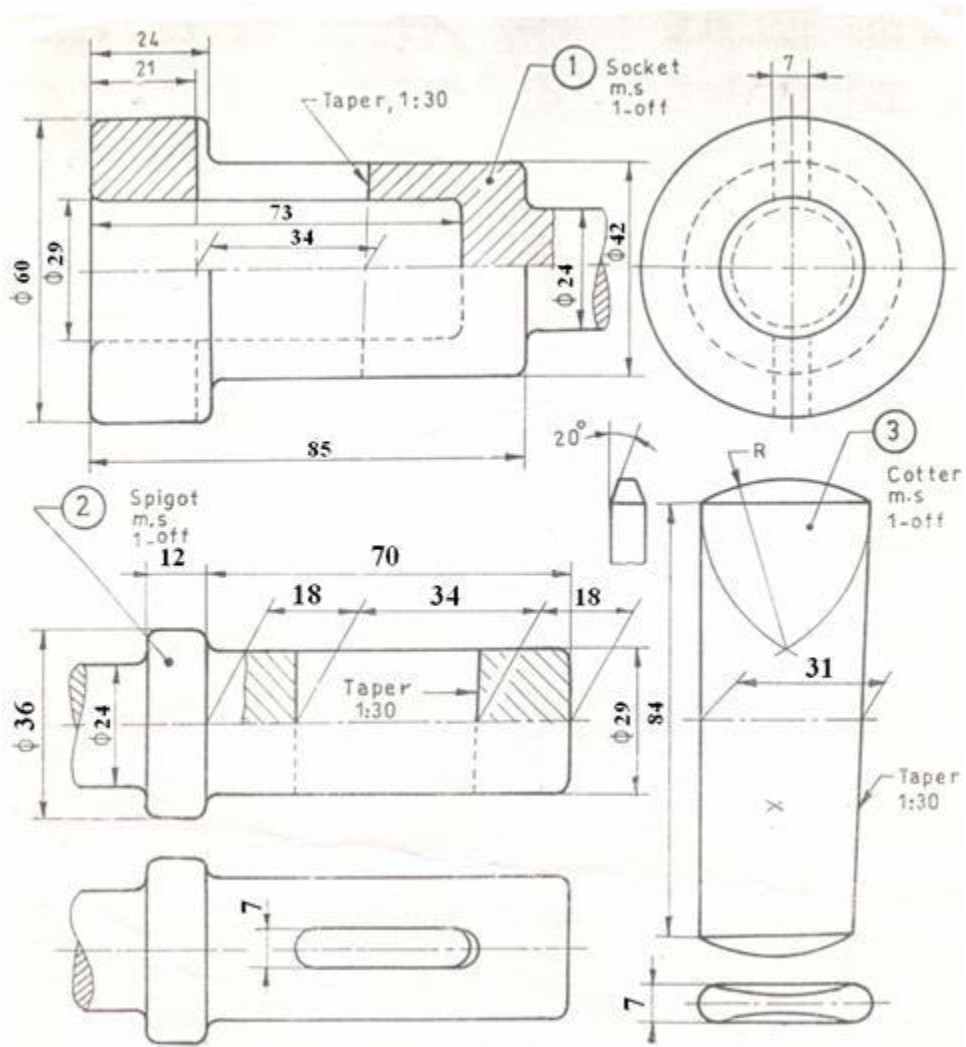


Assemble the sectional front view and top view of drawings, which are given following... .(Q. NO. 1 TO 7)

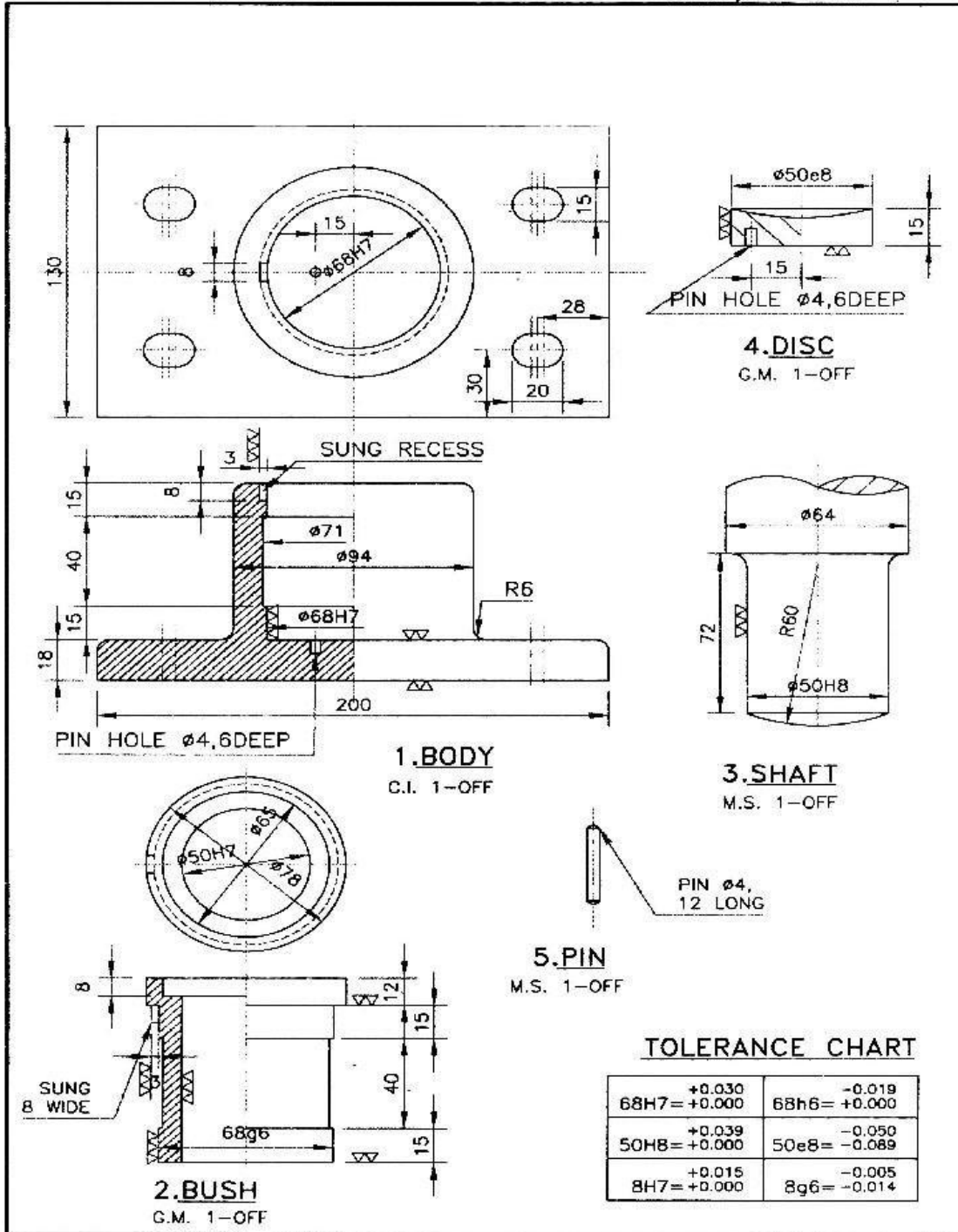
Q. NO. 1



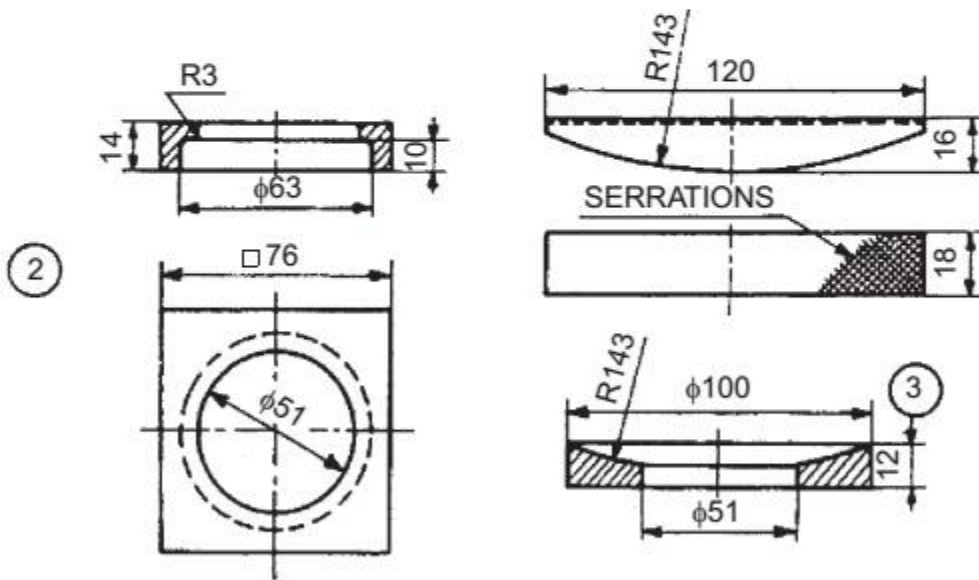
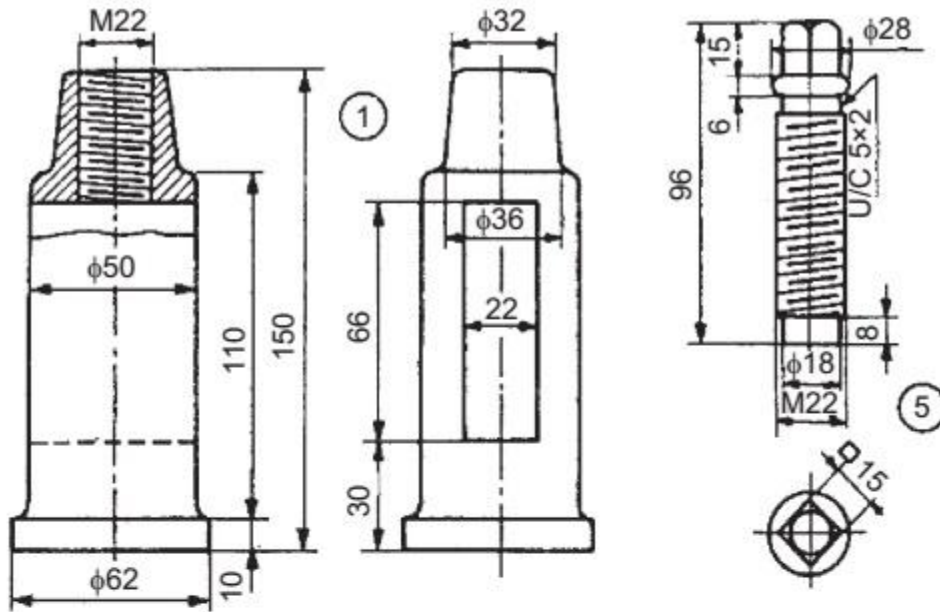
Q. NO. 2



Q. NO. 3



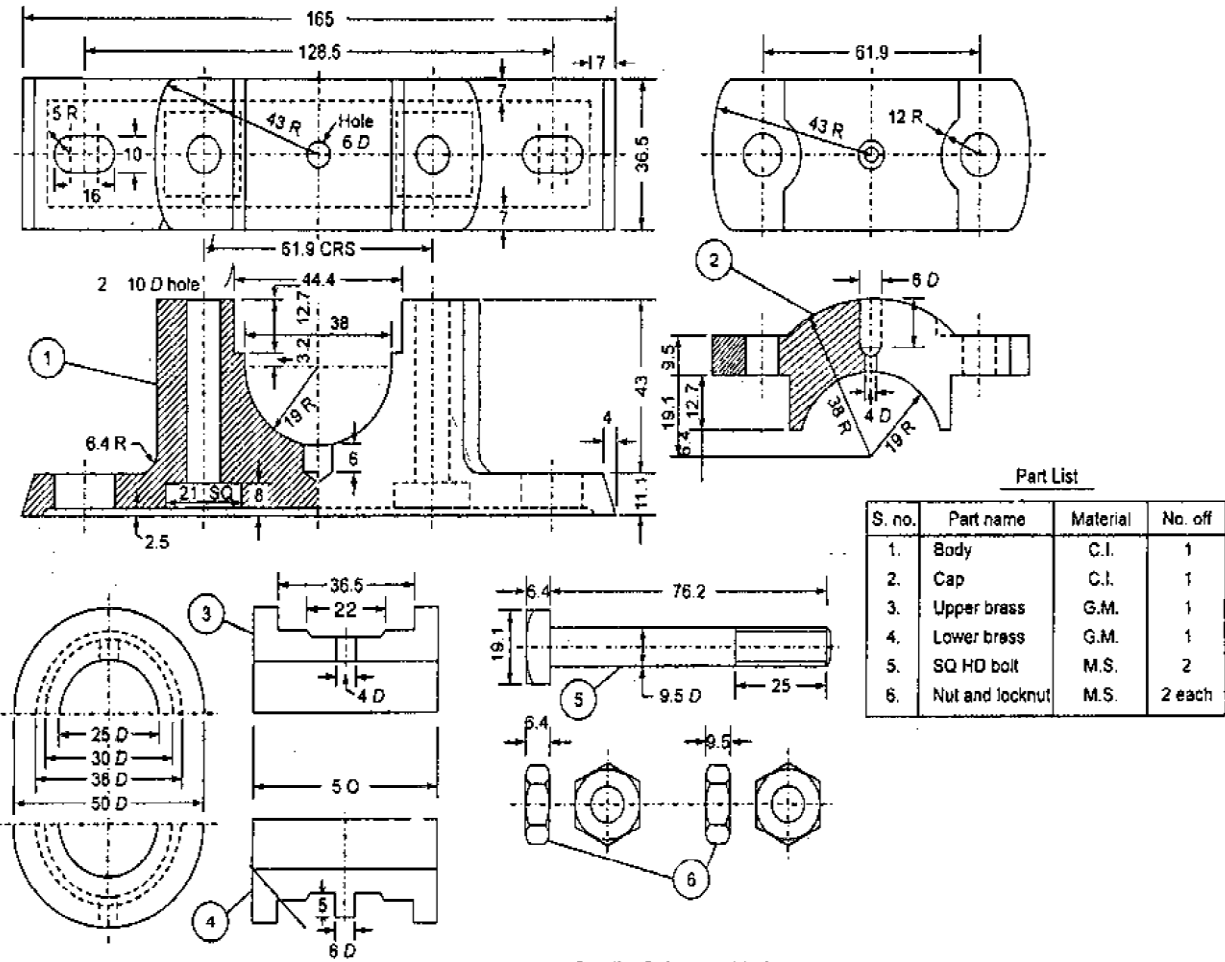
Q. NO. 4



Parts list

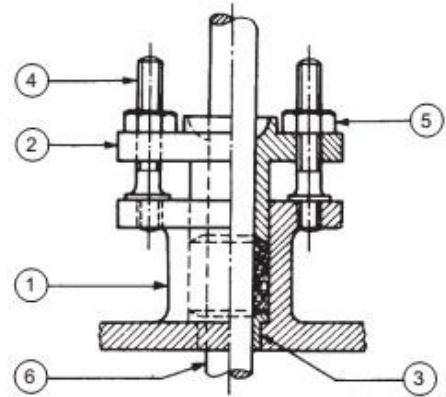
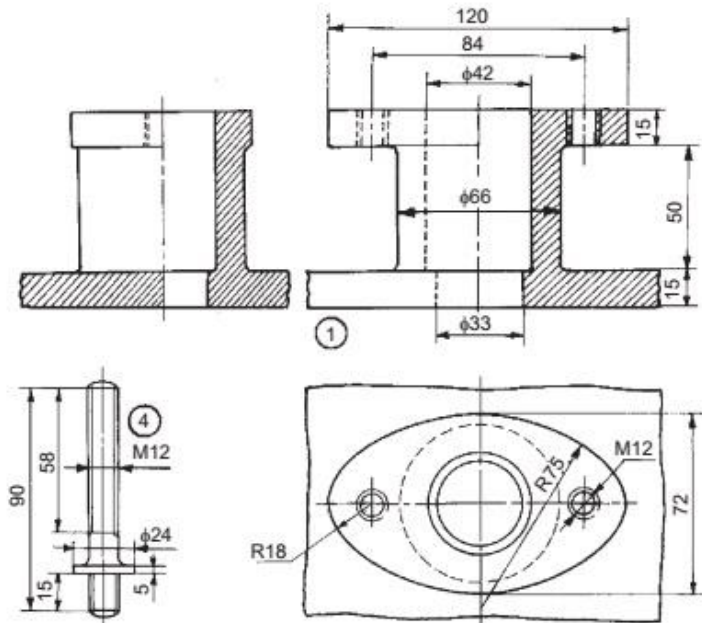
No.	Name	Matl	Qty
1	Pillar	MCS	1
2	Block	MCS	1
3	Ring	MS	1
4	Wedge	MCS	1
5	Screw	TS	1

Q. NO. 5



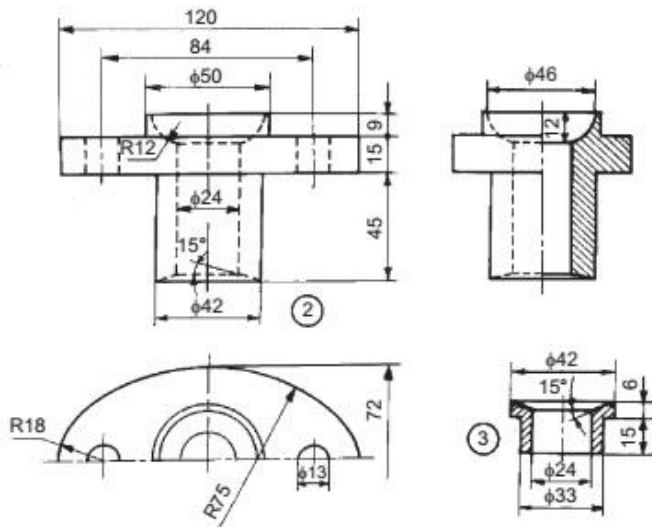
Details of plummer block

Q. NO. 6



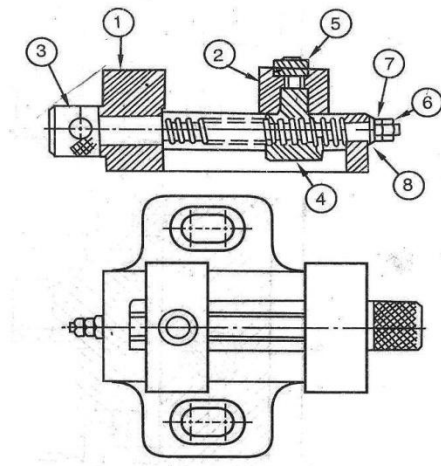
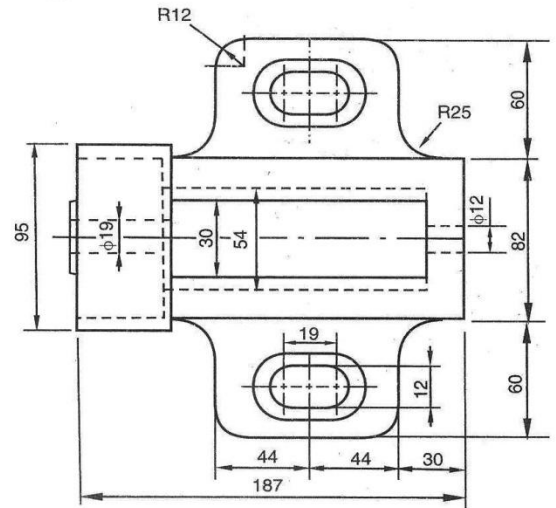
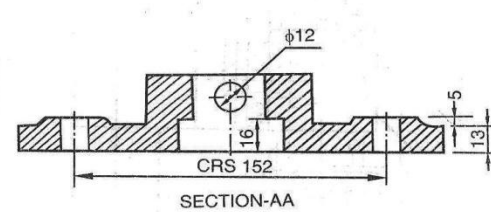
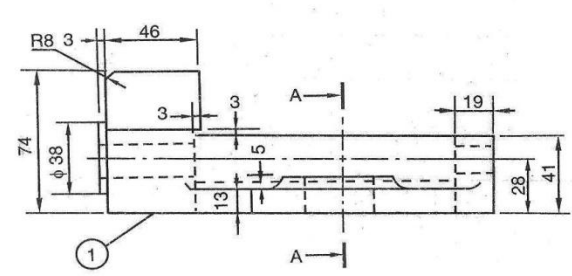
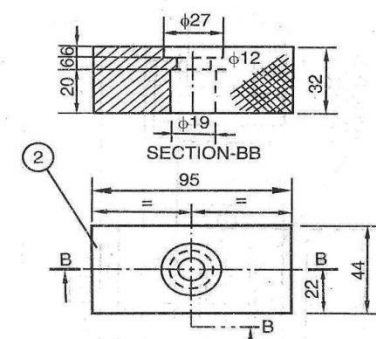
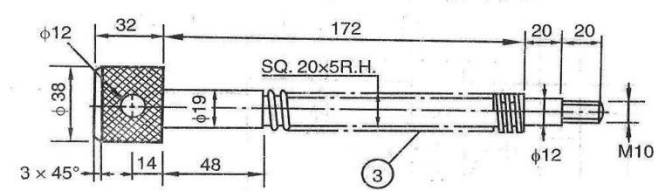
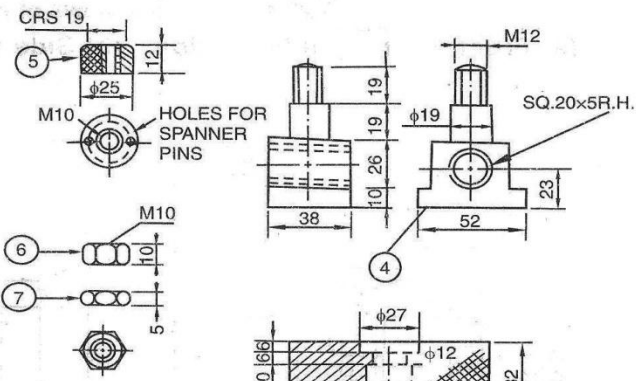
Parts list

Part No.	Name	Matl	Qty
1	Body	CI	1
2	Gland	Brass	1
3	Bush	Brass	1
4	Stud	MS	2
5	Nut, M12	MS	2



Q. NO. 7

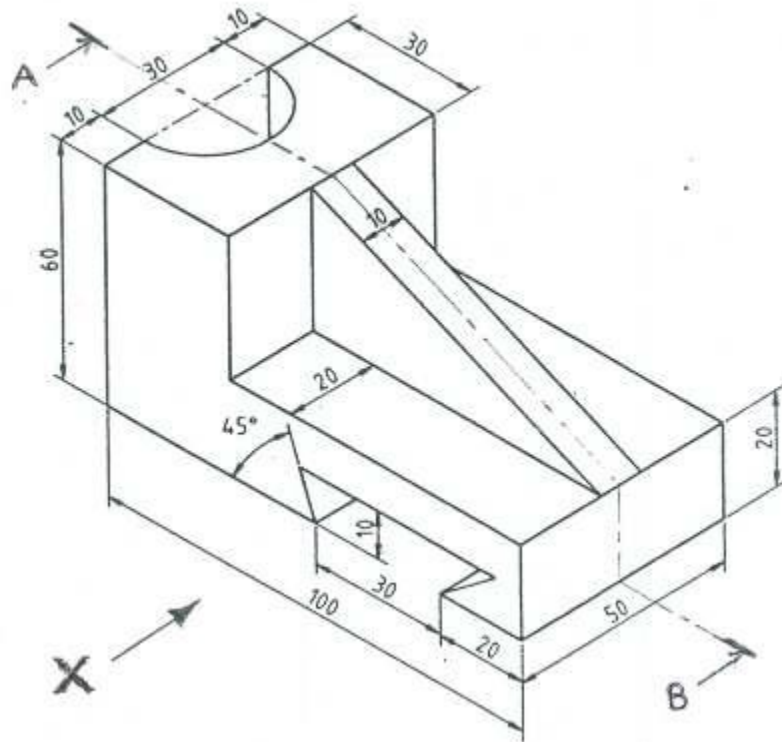
NO.	NAME	MAT.	NO.OFF
1	BASE	C.I.	1
2	SLIDING JAW	M.S.	1
3	SCREW	M.S.	1
4	SLIDING JAW		1
	CLAMPING BOLT	M.S.	1
5	CIRCULAR NUT	M.S.	1
6	HEX. NUT	M.S.	1
7	LOCK NUT	M.S.	1
8	WASHER	M.S.	1



Details of a machine vice

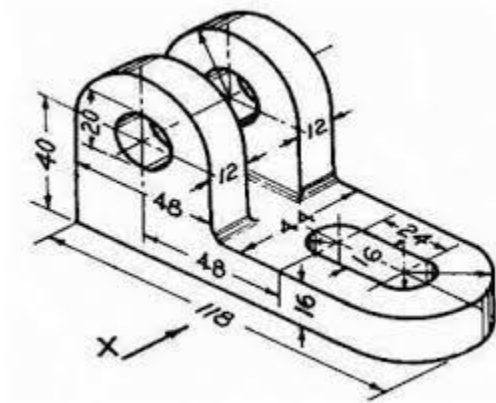
Draw the sectional front view side view and top view of given orthographic projections... (Q. NO. 08 TO... 14)

Q. NO. 8

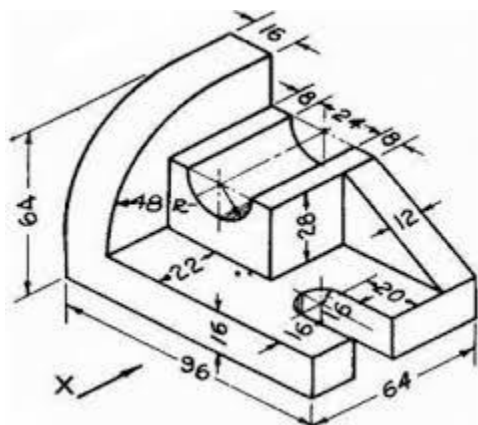


Q. NO.9

Q. NO.11



Q. NO 12



Q. NO. 13

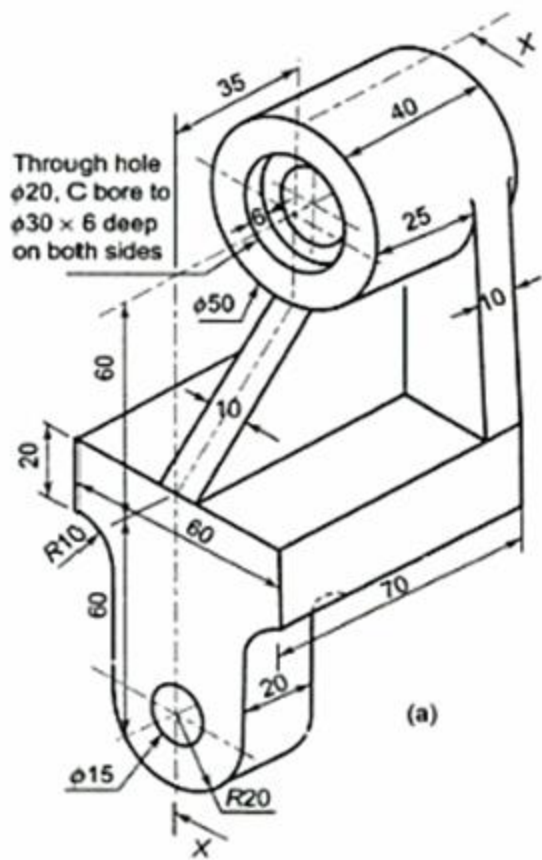


Fig. 3

Q. NO.14

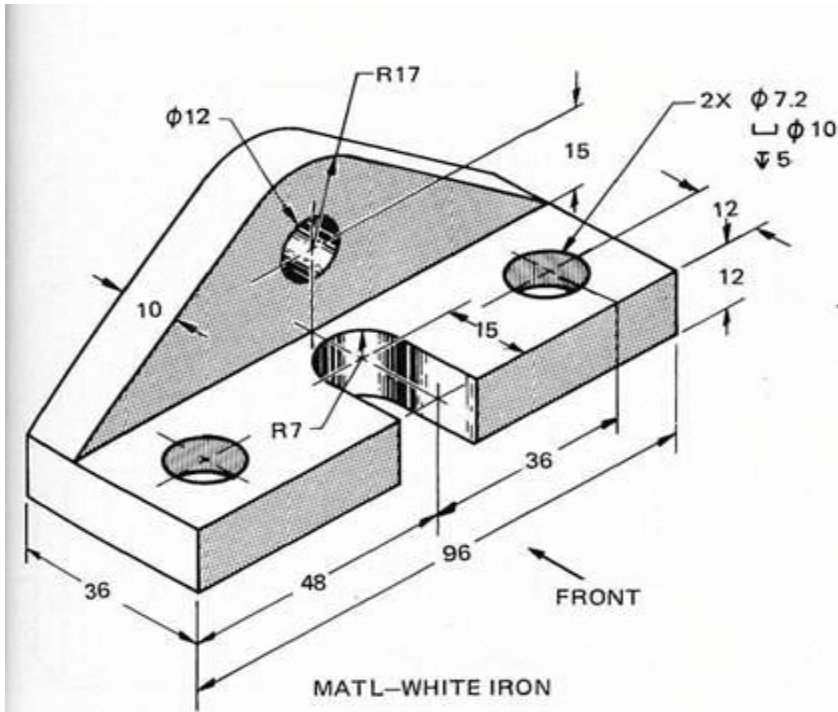


Figure 4-2-E Yoke

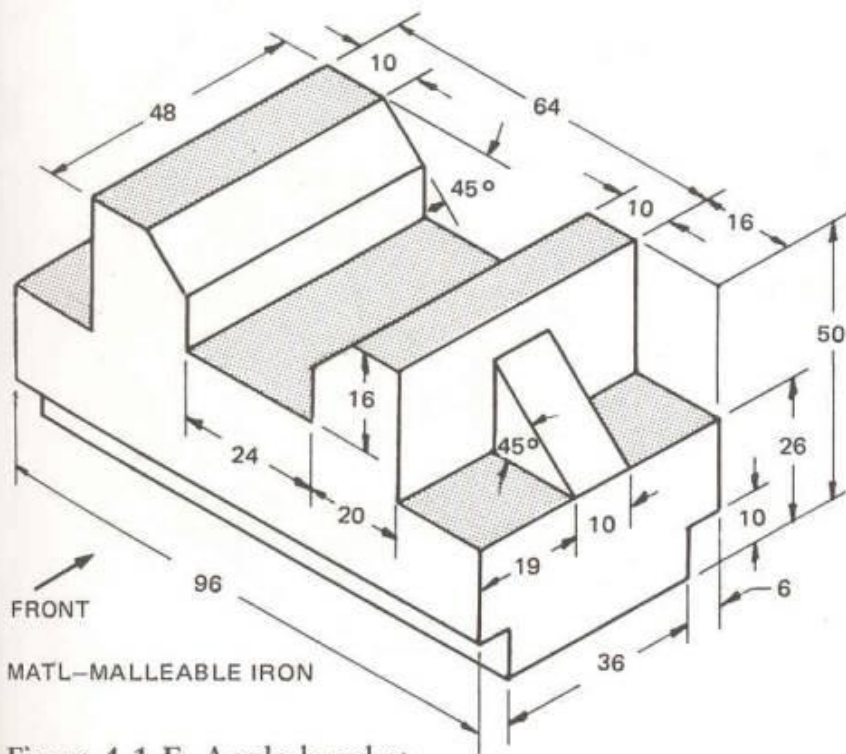


Figure 4-1-E Angle bracket

